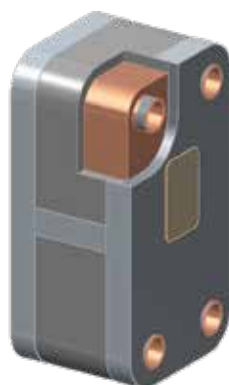
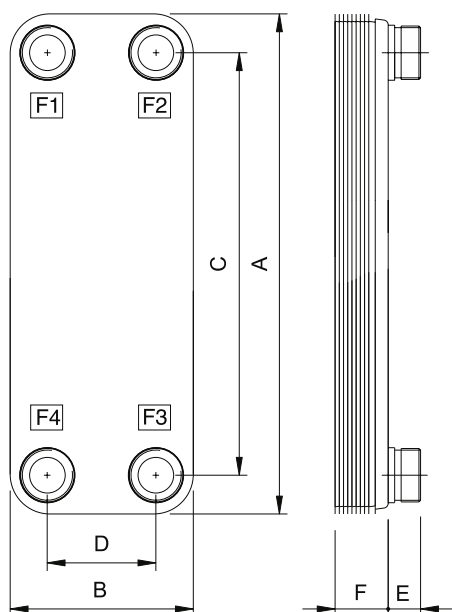


# SCAMBIATORI A PIASTRE SALDO-BRASATE BRAZED PLATE HEAT EXCHANGERS

## PHE WB

Conessioni/Connections: DN25 ÷ DN65  
Superficie piastra/Plate surface: 0,024 ÷ 0,300



Su richiesta gli scambiatori PHE WB possono essere forniti coibentati

The PHE WB exchangers can be insulated on request

### CARATTERISTICHE / FEATURES

Modello	Diametro connessioni	Superficie piastra m <sup>2</sup>	Press. max di esercizio bar	A	B	C	D	E	PP
				mm					
WP4	1"	0,030	16	335	124	281	73	20	13+2,3xNP
P4	1"	0,024	30	310	111	250	50	24	9+2,4xNP
P7	1" 1/4	0,070	30	526	120	473	66	27	9+2,57xNP
P15	2"	0,150	30	530	256	439	177	27	10+2,48xNP
P30	2" 1/2	0,300	30	782	350	655	220	27	11+2,90xNP

Model	Couplings diameter	Plate surface m <sup>2</sup>	Max working pressure bar	A	B	C	D	E	PP
				mm					

SERIE PHE WB